

## eXactpark: Real-Time Space Status & Powerful Performance

Smart Parking Starts at the Stall with Sensor-Based Monitoring

Advanced Data Analytics | Industry-Leading Accuracy | Best Parking Experience

Parking touches all aspects of modern life, from the environment to economics, quality of life to public safety. Effective management of parking assets is a high priority, and it becomes infinitely more possible through the use of a smart parking solution with highly accurate and reliable data collection capabilities and intelligent analytics. On a basic level, parking data allows parking managers to get a clear picture of current parking utilization. However, it also provides valuable insights on how parking assets can be optimized to create a better driver experience, reduce greenhouse gas emissions, and improve driver and pedestrian safety.

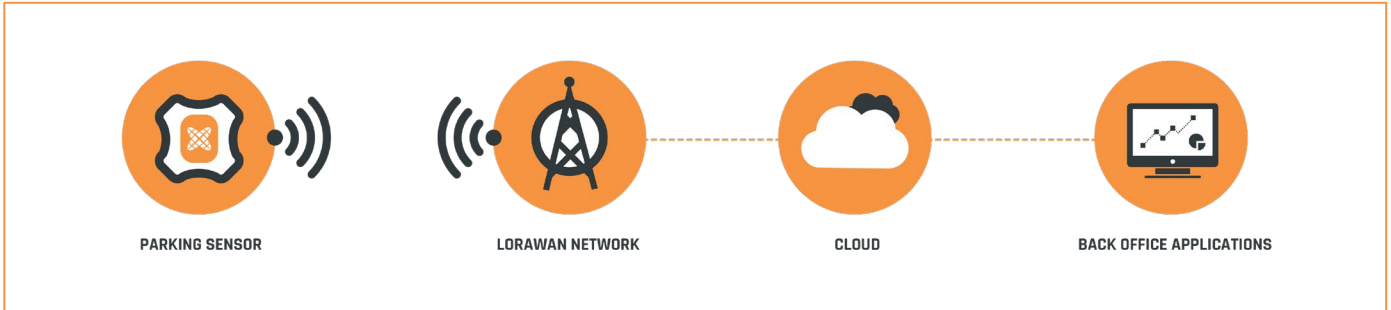


### Simplify & Improve the Parking Experience

eXactpark™ makes parking easier for drivers and parking managers alike. This is accomplished by capturing accurate data that enables a wide range of use cases, including real-time wayfinding, dynamic pricing, infrastructure planning, and intelligent enforcement. Powered by the award-winning SPS-X sensor, eXactpark uses LoRaWAN® technology to make available parking more accessible to drivers and enable smoother management of parking and curb assets. Gone are the days of endlessly circling for parking, resulting in congestion, high greenhouse gas emissions, and traffic incidents. Instead, drivers can access real-time parking availability via web or app integrations or use wayfinding signage along the way to guide them toward a convenient parking space.

### eXactpark Smart Parking Solution:

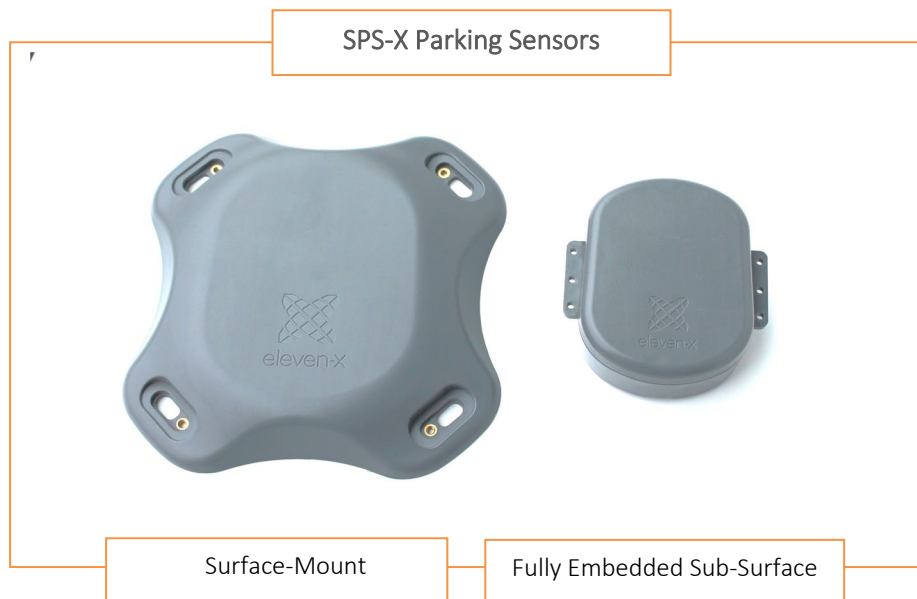
- *Real-time stall occupancy status*
- *Guidance and wayfinding*
- *Intelligent enforcement*
- *Curbside management*
- *Intelligent data & analytics*
- *Fully embedded, sub-surface sensor*
- *Easy integration with other technologies*

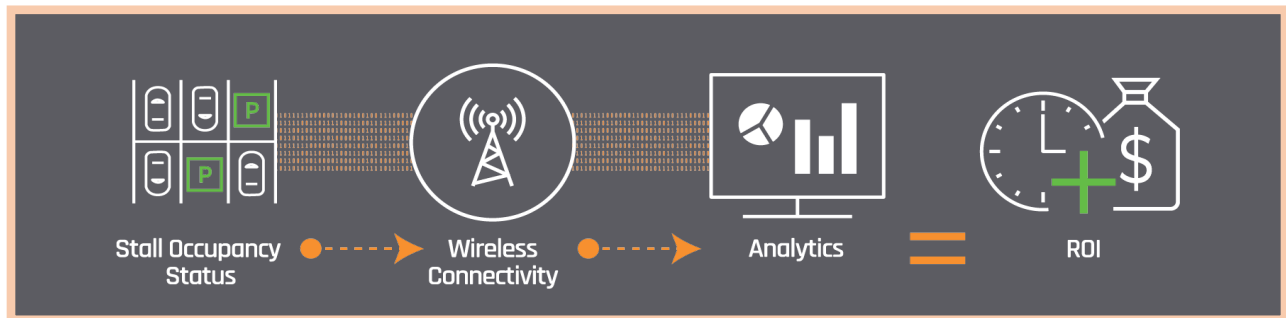


“X” MARKS THE SPOT FOR POWERFUL PARKING PERFORMANCE DATA  
 THE SPS-X SMART PARKING SENSOR: IN A CLASS OF ITS OWN

Studies have shown that sensor-based parking systems provide the best performance and value of any smart parking solution on the market, including the highest accuracy and frequency of data collection. The SPS-X™ takes this even further, as it is the only fully embedded subsurface parking sensor available. This means it stays intact during even the harshest weather and sensor reliability is never affected by snowplows or other vehicles. The SPS-X also boasts a 10-year battery life and features multi-sensor technologies that help filter out negative influences such as buried metal, electromagnetic interference, and other factors.

Since the SPS-X's reliability is never compromised, it boasts 99.7% sensing accuracy *in all conditions*. As a result, the data collected by the sensor is truly in real-time: drivers can trust that spaces are available when the app or web platform says they are, and parking managers can be assured of the precision of their data. Using a combination of magnetic and radar sensing, along with advanced algorithms, the SPS-X ensures accurate status updates and data collection as part of its continuous monitoring approach.

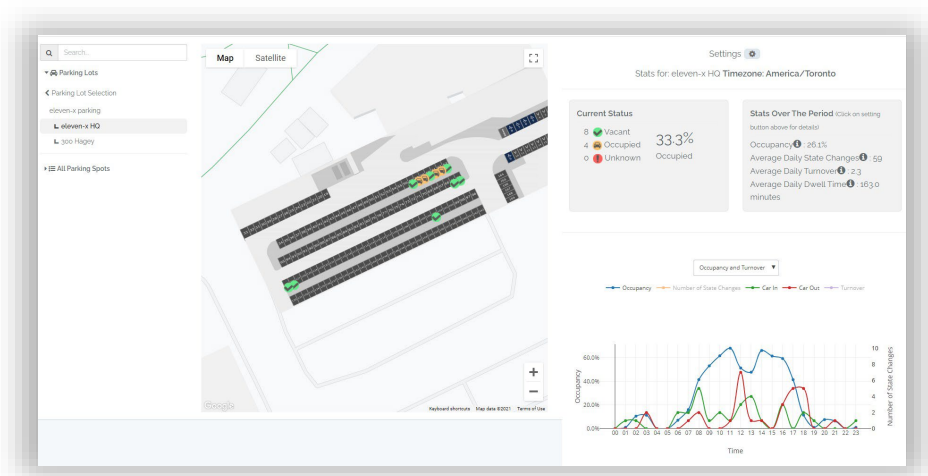
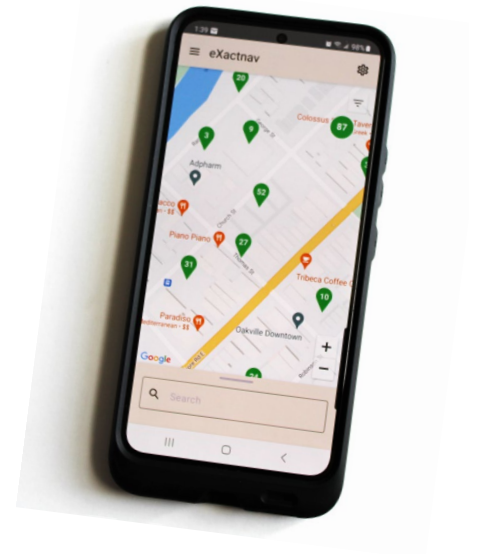




### eXactnav - Find Available Parking Fast!

Make it easier than ever before for drivers to find available parking with eleven-x's new wayfinding app, eXactnav™. eXactnav connects to SPS-X sensors to provide accurate, real-time stall availability and navigation for drivers – meaning no more time wasted wondering if parking will be available at a destination or circling for a spot. With its easy to use and flexible navigation options (including selecting a specific spot, destination, or zone), eXactnav can filter for a specific type of spot and notify when a selected spot has been occupied or become available.

Designed with safety in mind, eXactnav requires minimal driver interaction. It also highlights parking History and spots can be saved to a Favorites list for even easier access. Seamlessly integrated with eXactpark™, simply download the eXactnav app and go.



## Go Beyond the Typical Parking Experience

From fast and easy installation to driver navigation, eXactpark™ streamlines and simplifies the parking experience. An easy-to-use web application makes device set up quick and provides stress-free ongoing device management capabilities. Low power connectivity and communications then takes the data from the SPS-X™ and integrates with a dashboard, or into any platforms or back-office applications, to provide easy access to key analytics and detailed stall usage insights. Wayfinding signage and payment capabilities can also be integrated to further improve driver experience.

### A Sample of Our Customers:



### Memberships:



### FOR MORE INFORMATION:

web: [www.eleven-x.com](http://www.eleven-x.com) | email: [collaborate@eleven-x.com](mailto:collaborate@eleven-x.com)