



SIMPLE, SECURE AMI SOLUTION FOR CITIES OF ALL SIZES

Wireless, Cost-Efficient AMI (Advanced Metering Infrastructure) Water Metering

AMI for Communities of All Sizes

Cities and municipalities of all sizes are facing unprecedented challenges on today's world. Sustainability and conservation, data, security, flat budgets, increasing community expectations, and a desire to streamline operations, utilities have a to deal with to meet all of these objectives. While AMI can deliver most of the above, current smart water metering systems are known to be cost-prohibitive, overly complex and aren't capable of scaling to meet the objectives of small-to-mid size communities.

Wireless, Scalable, Cost-Efficient AMI

The benefits of implementing an AMI solution carries through from the utility/municipality right through to the community and residents as a whole.

For the Utility

- Accurate consumption data integrated with billing applications
- Reduced costs by eliminating manual or drive-by data collection
- Increased efficiencies:
 - Streamlined meter-to-cash process
 - Elimination of estimated reads
 - Increase read frequency from monthly to hourly
 - No manual data entry
 - Reduced time validating bills
 - Visibility into compliance during periods of use restrictions
- Reduced water loss
- Optimal customer experience

For Residents

- Visibility in to accurate and timely data consumption data
- Real-time usage tracking
- Access to historical data provides visibility into usage patterns
- Actionable insights and alerting:
 - Potential in-home leakage
 - Usage peak times
- A better overall experience

eleven-x's eXactmeter AMI Solution Offers:

- Real-time consumption data capture
- Scalability for any size municipality
- Ultra-secure data transmission
- Flexibility: Connect with any meter or software package to build the right solution for your needs
- Cost efficiency
- Long lasting (up to 20 years of service)
- Easy 3-step deployment process

eXactmeter - An Easy AMI Solution

eleven-x's eXactmeter is a wireless AMI solution that consists of our battery-powered Meter Interface Unit (MIU-X) that connects to meters and transmits usage data securely via a carrier-grade LoRaWAN™ wireless network. The network is non-proprietary, open and built on a global standard. The solution can then be integrated with the municipalities infrastructure or displayed on a customized dashboard.



At the heart of the eXactmeter solution is eleven-x's MIU-X (meter interface unit) that easily integrates with existing meters, even currently deployed ones. A sample of our compatible meters includes Sensus, Neptune, Badger, Mueller, Kamstrup, Zenner and more.

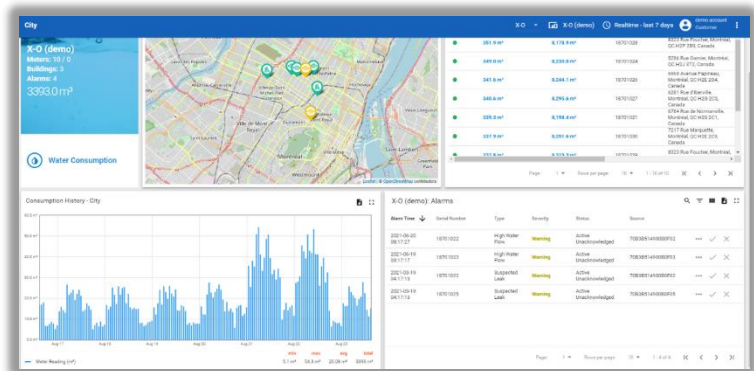
The eXactmeter solution eliminates:

- Prematurely abandoning metering assets
- Manual or drive-by reads
- Estimated reads
- Price increases & obsolescence of proprietary systems
- Running electricity to meters
- Errors in manual data entry



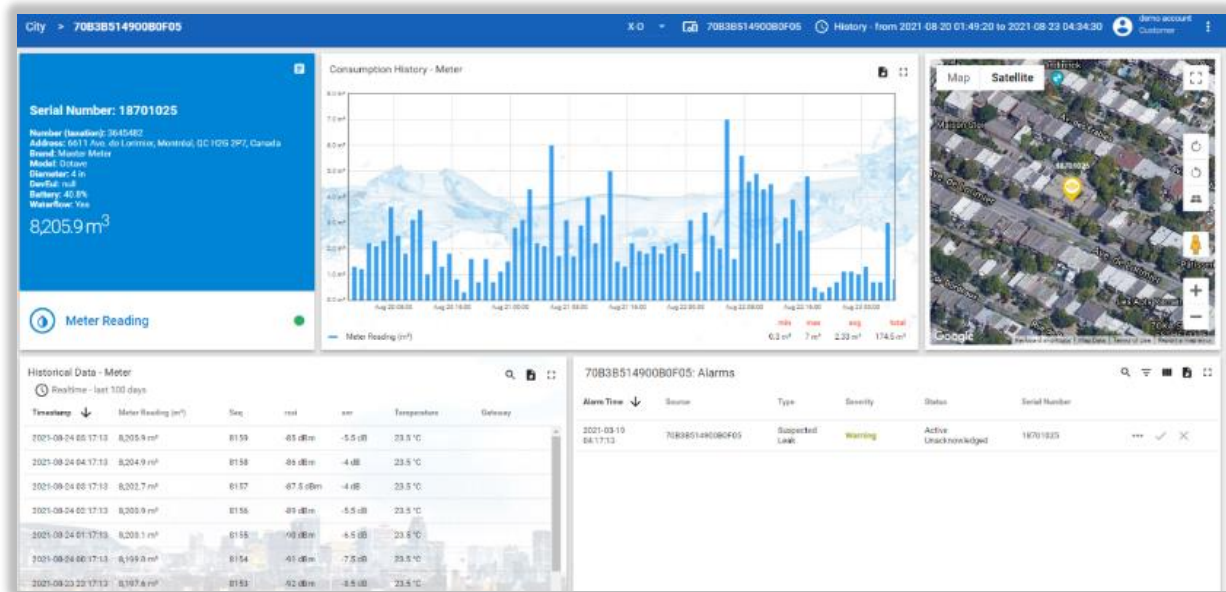
eXactmeter brings the benefits of AMI to cities of all types and sizes, without the cost or complexity of other smart meter solutions. We enable a meter agnostic, turnkey approach that provides the ability for any community to meet their individual requirements. And our featured software provides the needed benefits of:

- Interval meter data
- Meter alarms
- Standard reports
- Integration with billing software
- And more!





Additionally, there is no need for sole-source proprietary network connectivity, so customer procurement options remain flexible without any long-term or limiting commitments.



And installation is a simple process that can be completed in a matter of minutes saving money, time and resources and near-zero maintenance costs resulting in a low total cost of ownership and an easy-to-manage program.

GETTING WIRELESS IOT CONNECTIVITY USING YOUR CURRENT DEVICES IS AS EASY AS 1 2 3

EASY INSTALLATION:

- 1 CONNECT THE APPROPRIATE ELEVEN-X INTERFACE UNIT TO YOUR EXISTING INSTALLED DEVICES (no special tools or expertise required)
- 2 SECURE PROVISIONING AND DEVICE ACTIVATION
- 3 VALIDATION OF DEVICE CONNECTIVITY

FOR MORE INFORMATION:
web: www.eleven-x.com | email: collaborate@eleven-x.com



LoRaWAN™ mark used under license from the LoRa Alliance™

eleven-x.com